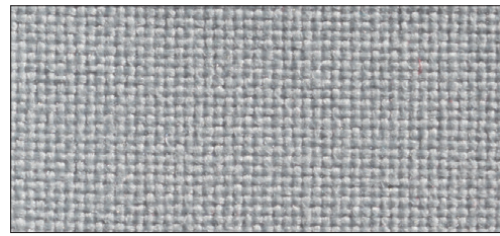


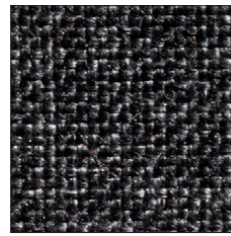
CATEGORIA 1 MADRID



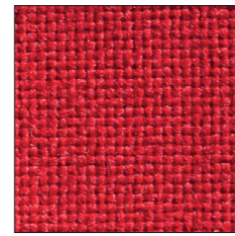
ignifugo classe 1IM
fire proof class 1IM



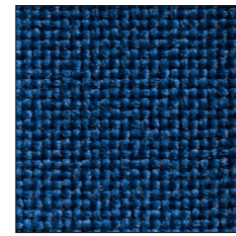
MD 515



MD 514



MD 502

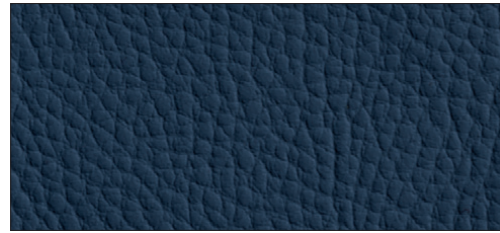


MD 510



MD 511

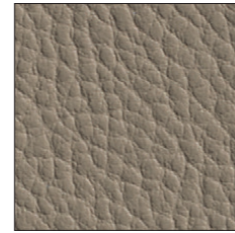
CATEGORIA 1 COVE



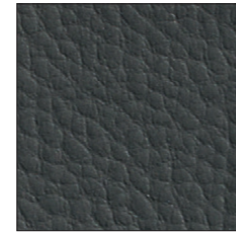
C 539



C 21



C 84



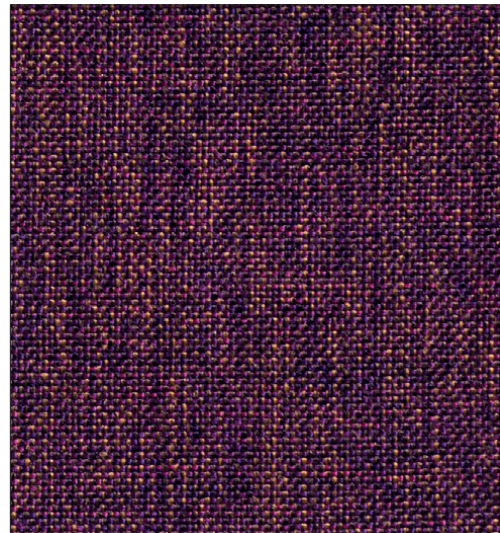
C 98



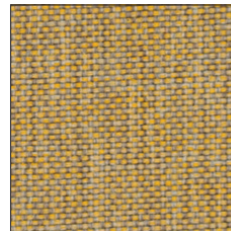
C 560

CATEGORIA 2 ANGEL

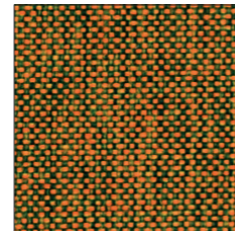
ignifugo classe 1IM
fire proof class 1IM



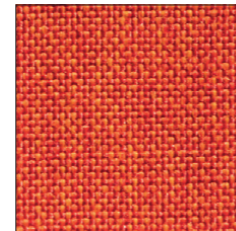
AN 38



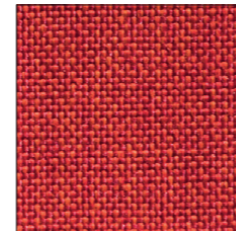
AN 46



AN 14



AN 30



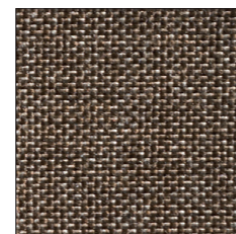
AN 35



AN 53



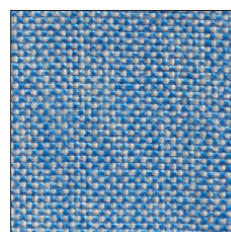
AN 50



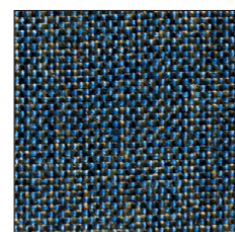
AN 45



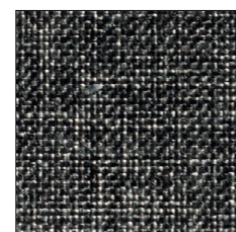
AN 20



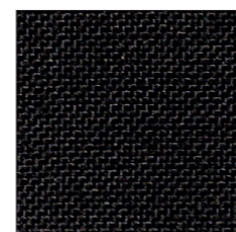
AN 55



AN 39



AN 56

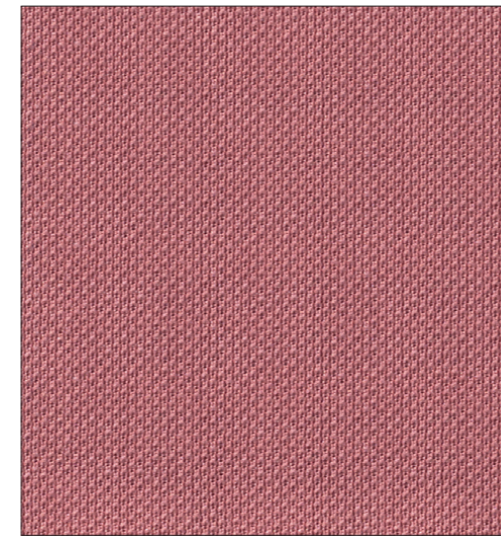


AN 57

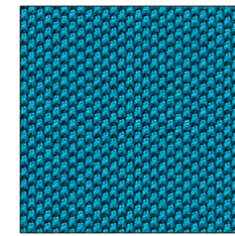
CATEGORIA 2 ONE



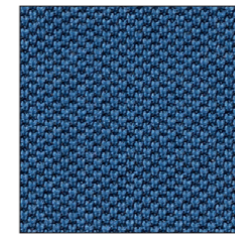
ignifugo classe 1IM
fire proof class 1IM



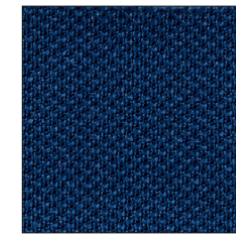
ON 4067



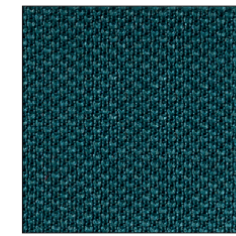
ON 6591



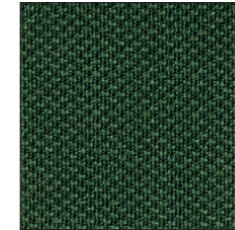
ON 6512



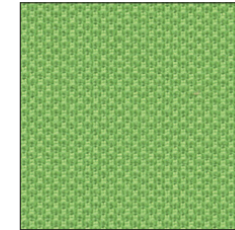
ON 6017



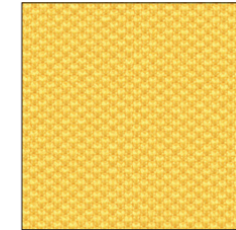
ON 7033



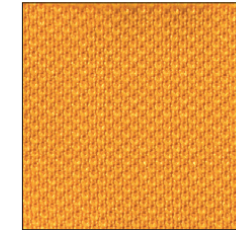
ON 7029



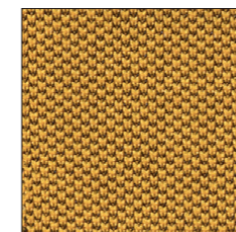
ON 7022



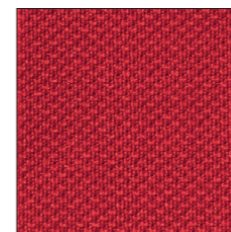
ON 3007



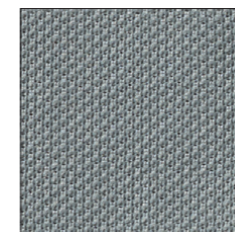
ON 3008



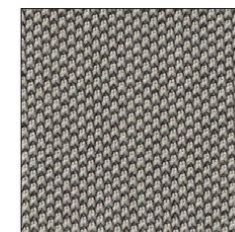
ON 3530



ON 4028



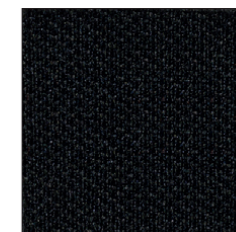
ON 8032



ON 1506



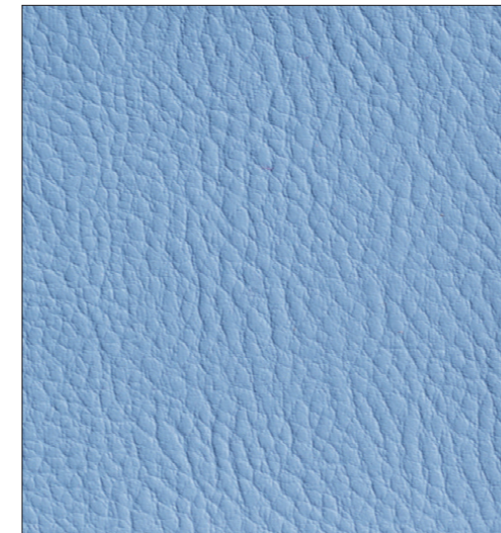
ON 2519



ON 8033

CATEGORIA 2 GAZEBO

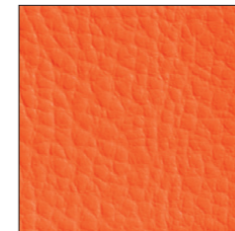
ignifugo classe 1IM
fire proof class 1IM



S 4979



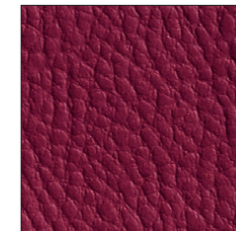
S 71



S 792



S 680



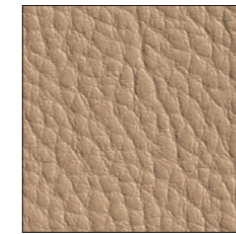
S 726



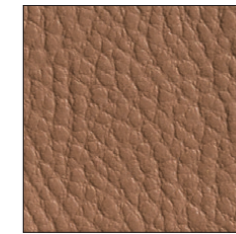
S 6



S 151



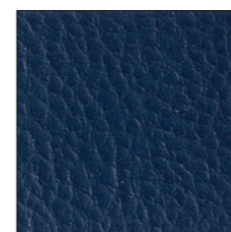
S 1194



S 1307



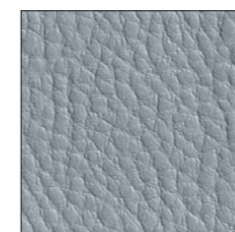
S 1809



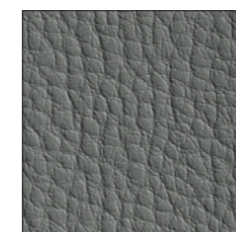
S 4947



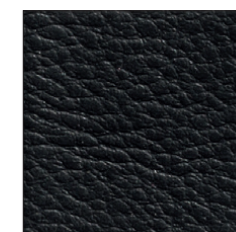
S 6985



S 4009



S 1955



S 991

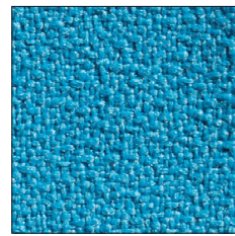
CATEGORIA 2 KING-FLEX



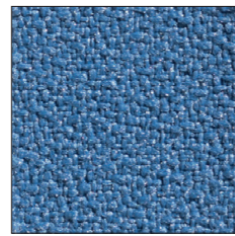
ignifugo classe 1IM
fire proof class 1IM



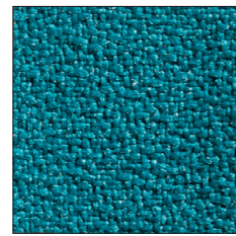
KF 1006



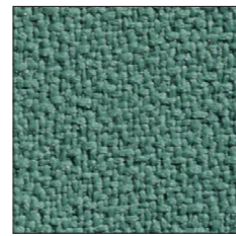
KF 6007



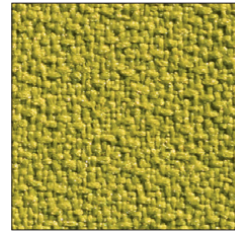
KF 6026



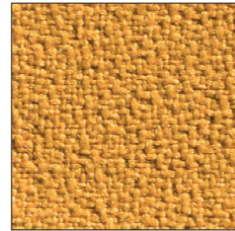
KF 7023



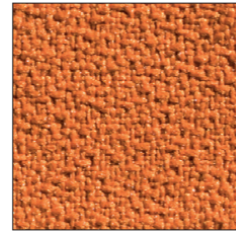
KF 7015



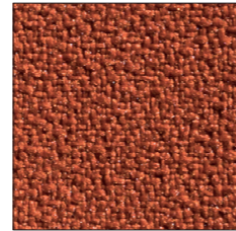
KF 3030



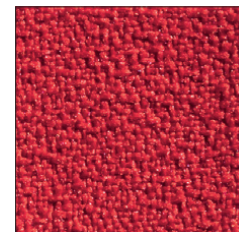
KF 3083



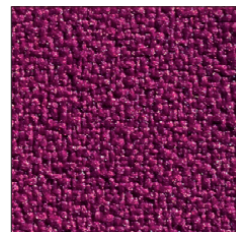
KF 4030



KF 4066



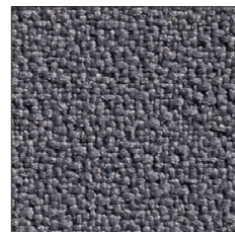
KF 4008



KF 4020



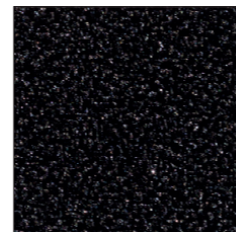
KF 8027



KF 8009



KF 9228



KF 8033

CATEGORIA 3 SECRET

ignifugo classe 1IM
fire proof class 1IM



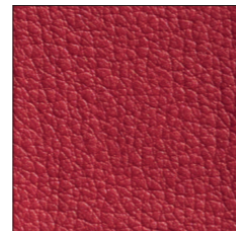
SC 1013



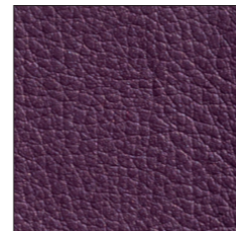
SC 1007



SC 1008



SC 1009



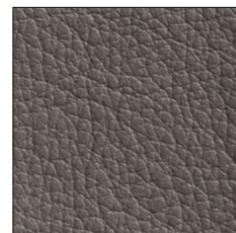
SC 1020



SC 1002



SC 1018



SC 1005



SC 1006



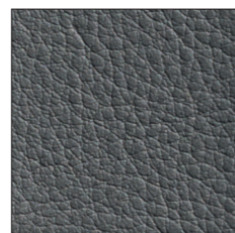
SC 1011



SC 1021



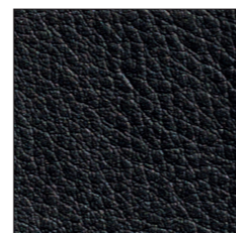
SC 1015



SC 1024



SC 1012

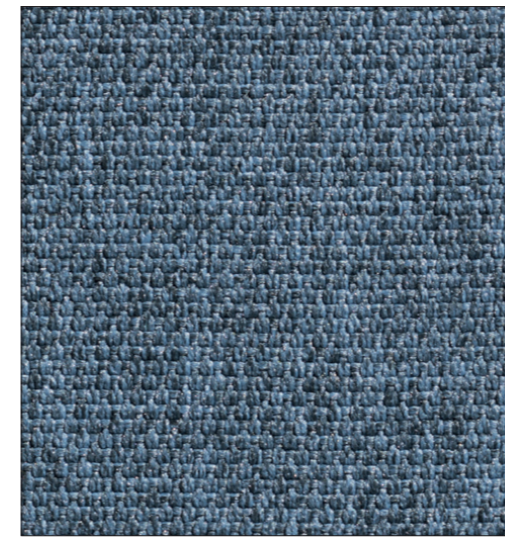


SC 1017

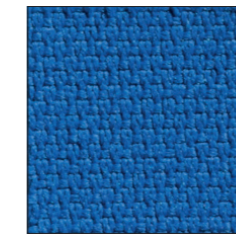
CATEGORIA 3 MINI



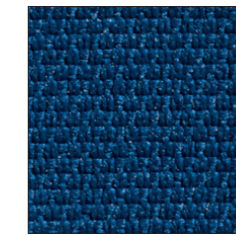
ignifugo classe 1IM
fire proof class 1IM



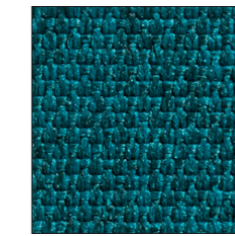
MN 6524



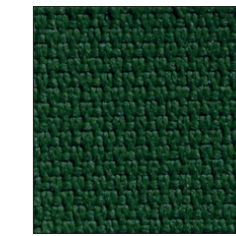
MN 6004



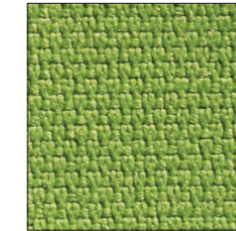
MN 6015



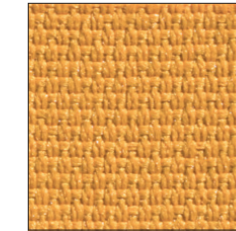
MN 6502



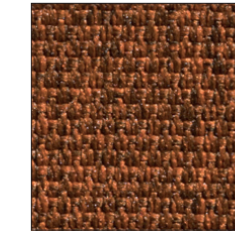
MN 7007



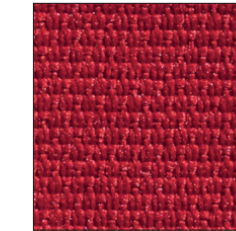
MN 7022



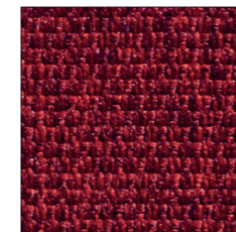
MN 3008



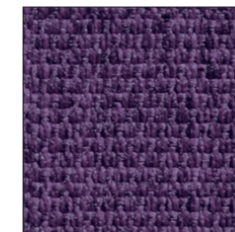
MN 4530



MN 4028



MN 4528



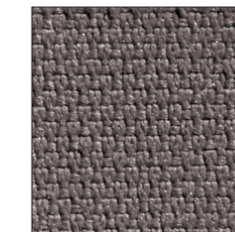
MN 5596



MN 1006



MN 1014



MN 1020

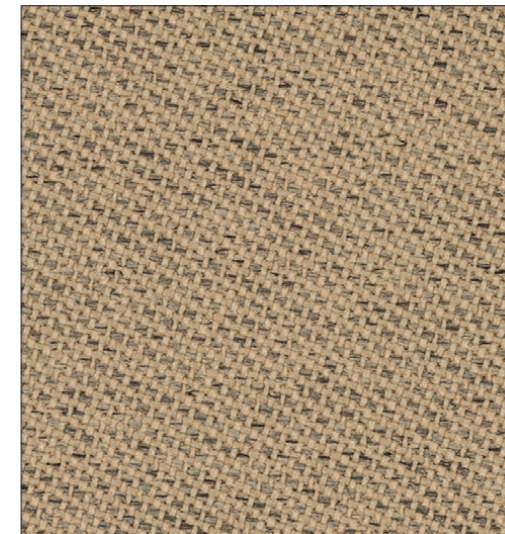


MN 8033

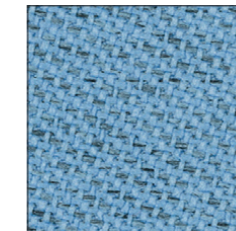
CATEGORIA 3 CHILI



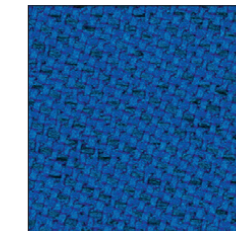
ignifugo classe 1IM
fire proof class 1IM



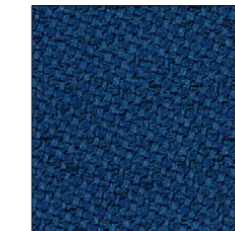
CH 61172



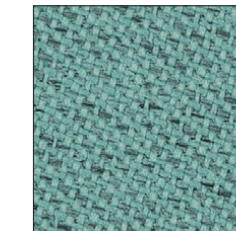
CH 66172



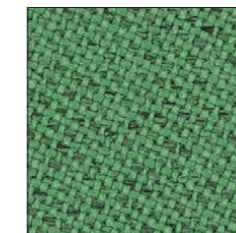
CH 66171



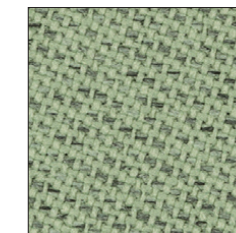
CH 66174



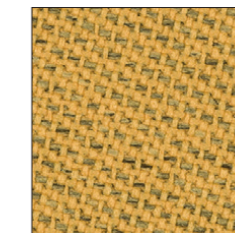
CH 68189



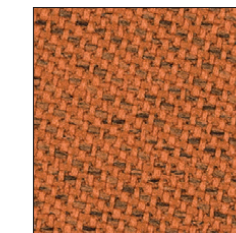
CH 68193



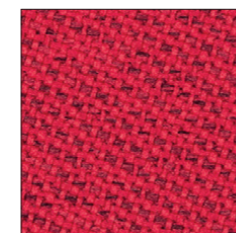
CH 68195



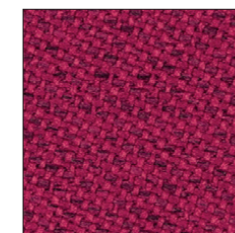
CH 62086



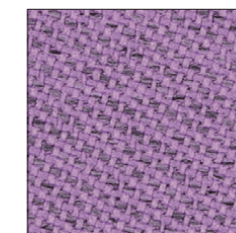
CH 63099



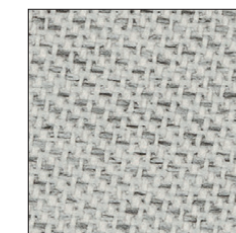
CH 64201



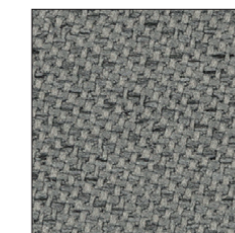
CH 64198



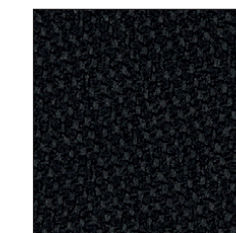
CH 65107



CH 60114




CH 60116



CH 60999

CATEGORIA 4 PELLE/LEATHER

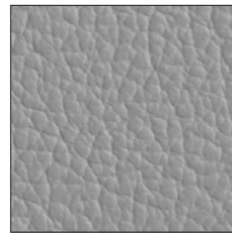
pelle vera
genuine leather 



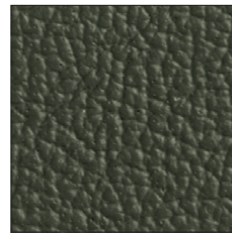
P 9027



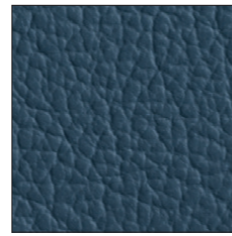
P 9003



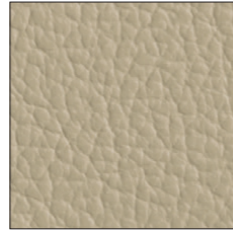
P 9033



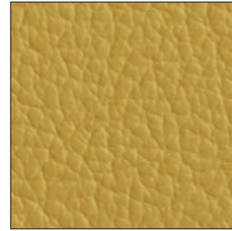
P 9045



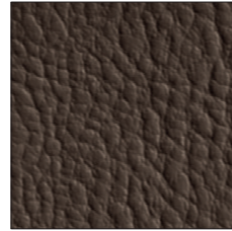
P 9031



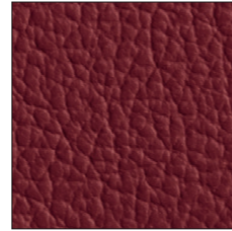
P 9004



P 9038



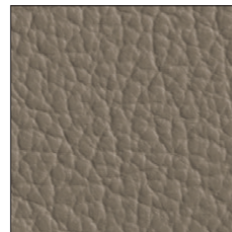
P 9030



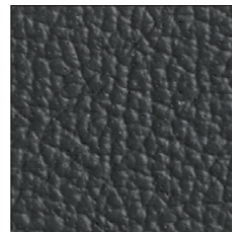
P 9017



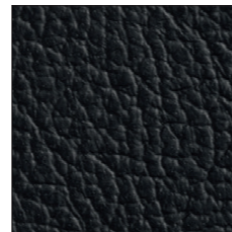
P 1



P 84

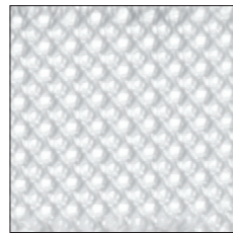


P 98

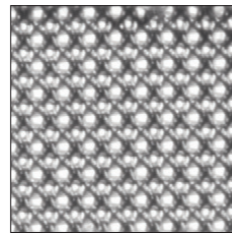


P 560

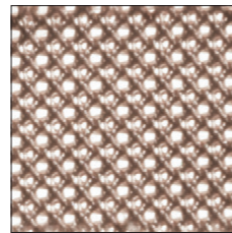
RETE MESH



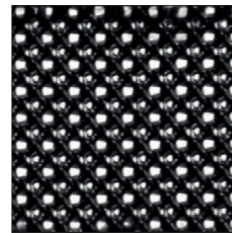
M 2



M 3

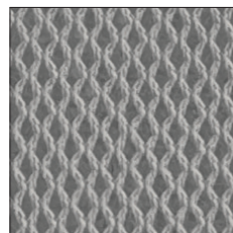


M 4



M 10

Disponibile solo per modello Spark
Available for Spark model only

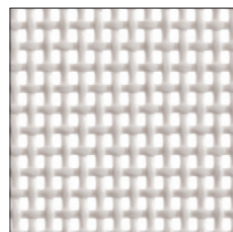


XL 09

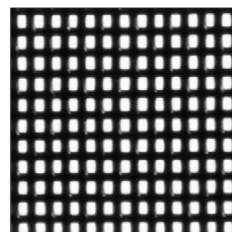


XL 00

Disponibile solo per modello Hola
Available for Hola model only



M 200



M 100

CATEGORIA 1

MADRID

± 230 g/mq
100% PP polipropilene F.R.
100% PP Polypropylene F.R.
80.000 cicli martindale
80.000 martindale cycles
Resistenza al fuoco/Flammability
CLASSE 1 IM - UNI 9175
EN 1021 - 1/2
BS 5852 /2 - CRIB 5
California TB 117

COVE

± 565 g/mq
82% PVC - 7% Cotone
11% Poliestere
82% PVC - 7% Cotton
11% Polyester
50.000 cicli martindale
50.000 martindale cycles

CATEGORIA 2

ANGEL

± 228 g/mq
100% polipropilene F.R.
100% polypropylene F.R.
100.000 cicli martindale
100.000 martindale cycles
Resistenza al fuoco/Flammability
CLASSE 1 IM - UNI 9175
EN 1021 - 1/2
BS 5852 /2 - CRIB 5
California TB 117

ONE

± 350 g/mq
100% poliestere riciclato
100% recycled polyester
100.000 cicli martindale
100.000 martindale cycles
Resistenza al fuoco/Flammability
CLASSE 1 IM - UNI 9175
BS 7176
EN 1021 - 1/2
BS 5852 /2 - CRIB 5
California TB 117

GAZEBO

± 640 g/mq
87,5% Polivinilcloruro plastificato - 12,5%
Cotone
87,5% Plasticized polyvinylchloride - 12,5%
Cotton
50.000 cicli martindale/50.000 martindale
cycles
Resistenza al fuoco/Flammability
CLASSE 1 IM - UNI 9175
BS 7176
EN 1021-1/2
California TB 117

KING-FLEX

± 300 g/mq
100% poliestere Trevira CS
100% Polyester Trevira CS
100.000 cicli martindale
100.000 martindale cycles
Resistenza al fuoco/Flammability
CLASSE 1 IM - UNI 9175
BS 7176
EN 1021 - 1/2
BS 5852 /2 - CRIB 5
California TB 117

CATEGORIA 3

SECRET

± 540 g/mq
76% PVC - 2% PU - 22% PES
76% PVC - 2% PU - 22% PES
60.000 cicli martindale
60.000 martindale cycles
Resistenza al fuoco/Flammability
CLASSE 1 IM - UNI 9175
EN 1021 - 1/2
California TB 117
Impermeabile/resistente ai
raggi UV/adatto per esterno/
waterproof /UV rays resistant/
suitable for outdoor

MINI

± 340 g/mq
100% poliestere Trevira CS
100% Polyester Trevira CS
100.000 cicli martindale
100.000 martindale cycles
Resistenza al fuoco/Flammability
CLASSE 1 IM - UNI 9175
BS 7176
EN 1021 - 1/2
BS 5852 /2 - CRIB 5
California TB 117

CHILI

± 470 g/mq
100% Poliestere riciclato post-consumo FR
100% post-consumer recycled
polyester FR
60.000 cicli martindale 60.000
martindale cycles
Resistenza al fuoco/Flammability
CLASSE 1 IM - UNI 9175
BS 7176
EN 1021 - 1/2
California TB 117-2013
BS 5852 Crib 5
CA TB 117-2013
NFP 92-503/504/505 M1
DIN 4102 - B1

CATEGORIA 4

PELLE - LEATHER

100% vera pelle
100% genuine leather

RETE MESH

M2 - M3 - M4 - M10

100% poliestere - martindale: 25.000 cicli
100% polyester - martindale: 25.000 cycles
Su richiesta/Upon request:
RETE NERA M10 disponibile
in versione ignifuga (M10 FR)
BLACK MESH M10 is also available
with fire proof treatment (M10 FR)

XL 00 - XL 09

Disponibile solo per modello Spark
Available for Spark model only
± 370 g/mq
100% poliestere - martindale:
100.000 cicli +/-20%
100% polyester - martindale:
100.000 cycles +/- 20%
Resistenza al fuoco/Flammability
California TB 117

M 100-M 200

Disponibile solo per modello Hola
Available for Hola model only
70% polivinile-30% PES
martindale: 100.000 cicli
70% polyvinyl-30%PES
martindale: 100.000 cycles